

ASD□K Key Selector Switches

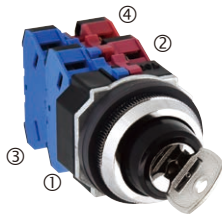
Package Quantity: 1

Shape	Key Selector (Key No. 0) ASD□K															
	Contact Configuration					Maintained	Spring Return from Right	Spring Return from Left								
	Contact	Contact Block		Operator Position		1	2	1	2	Contact Block		Operator Position				
Mounting Position		Contact	1	2	Mounting Position					Contact	1	2	1	2		
90° 2-position	1NO (10)	①	NO		●	ASD2K10N	ASD21K10N	①	NO	●		ASD22K10N				
		②	—	Dummy Block									②	—	—	
	1NO-1NC (11)	①	NO		●	ASD2K11N	ASD21K11N	①	NO	●		ASD22K11N				
		②	NC	●									②	NC		●
	2NO (20)	①	NO		●	ASD2K20N	ASD21K20N	①	NO	●		ASD22K20N				
		②	NO		●								②	NO		●
	2NO-2NC (22)	①	NO		●	ASD2K22N	ASD21K22N	①	NO	●		ASD22K22N				
		②	NC	●									②	NC		●
		③	NO		●								③	NO		●
		④	NC	●									④	NC		●
	45° 3-position	2NO (20)	①	NO	●		ASD3K20N	ASD31K20N	ASD32K20N	ASD33K20N						
			②	NO		●					②	NO		●		
2NC (02)		①	NC		●	ASD3K02N	ASD31K02N	ASD32K02N	ASD33K02N							
		②	NC		●					②	NC		●			
2NO-2NC (22)		①	NO	●		ASD3K22N	ASD31K22N	ASD32K22N	ASD33K22N							
		②	NO		●					②	NO		●			
		③	NC		●					③	NC		●			
		④	NC		●					④	NC		●			
4NO (40)		①	NO	●		ASD3K40N	ASD31K40N	ASD32K40N	ASD33K40N							
		②	NO		●					②	NO		●			
		③	NO	●						③	NO		●			
		④	NO		●					④	NO		●			
4NC (04)		①	NC		●	ASD3K04N	ASD31K04N	ASD32K04N	ASD33K04N							
		②	NC		●					②	NC		●			
		③	NC		●					③	NC		●			
		④	NC		●					④	NC		●			
☆ 3S		①	NO	●		ASD3K3SN-243☆	—	—	—							
		②	NO		●					②	NO		●			
		③	NC		●					③	NC		●			
		④	—	Dummy Block						④	—	—				

- CS
- Cylinder: Chrome-plated
 - Round bezel (metal): Chrome-plated
 - Key selector switches with 1 or 3 contact blocks have a dummy block.
 - On spring-returned types, the key can be released only from the maintained position. On maintained types, the key can be released from every position. See B-308 for specifying key retained positions.

- Key selector switch is supplied with two standard keys.
 - (1) Insert the key completely before turning the key, otherwise failure will result.
 - (2) Turn the operator to each position accurately.
- Different key number is available upon request. Contact IDEC.
- Selector switches with ☆ have a half contact operating current (load switching current value). Rated insulation voltage and rated current remain the same.
- See B-308 for gold-plated silver contacts.
- See B-312 for bottom view.

Contact Block Mounting Position



Dimensions

