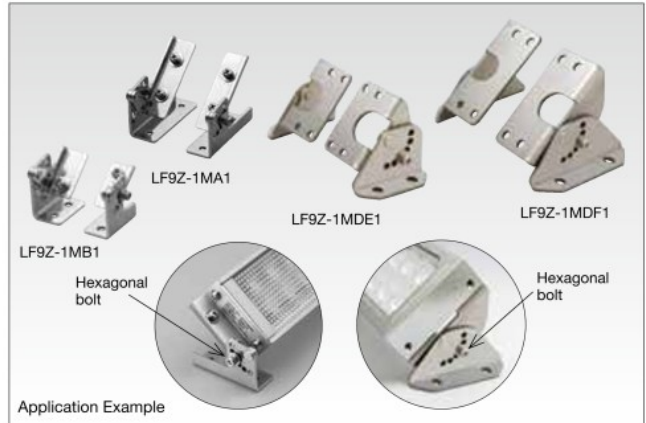


LF Series Adjustable Angle Mounting Bracket

**Mounting angle can be adjusted from 0° to 90°.
LED illumination units can be installed flexibly.**

- Mounting angle can be adjusted from 0° to 90° in 10° increments, providing more options for mounting of the LED illumination units.
- Illumination angle can be adjusted to suit the operator in various applications, such as visual inspection.

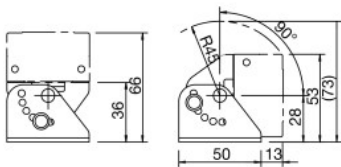


Adjustable Angle Mounting Bracket

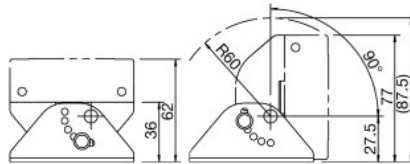
	Part No.	Applicable LED Illumination Unit	Material	Package Quantity
Adjustable Angle Mounting Bracket for LF1D/LF1B	LF9Z-1MDE1	LF1D-E/LF1D-EH	Stainless Steel	1 pair (right and left) (mounting screws supplied)
	LF9Z-1MDF1	LF1D-F/LF1D-FH		
	LF9Z-1MB1	LF1B-NA, -NB, -NC (not -ND, -NE, -NF)		
	LF9Z-1MA1	LF1A-A, -B, -D		

Dimensions

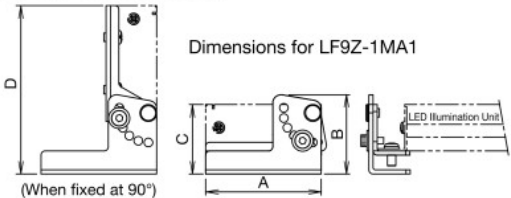
LF9Z-1MDE1



LF9Z-1MDF1

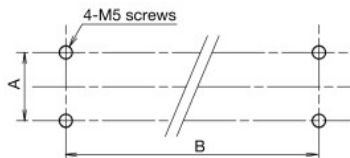


LF9Z-1MB1/1MA1



- Use the attached hexagonal bolts to fix the LF1D at the desired angle.
- See specifications of the LF1D for operating environment and mechanical strength.

Mounting Hole Layout



Part No.	E	F	G
LF9Z-1MDE1	25 ±0.2	374 ±2.0	4-M5
LF9Z-1MDF1	40 ±0.2	292 +4.0 -2.0	4-M5
LF9Z-1MB1	14	(Note)	4-M4
LF9Z-1MA1	25	(Note)	4-M4

Note: Same as the mounting hole centers of LED illumination units.

Part No.	A	B	C	D
LF9Z-1MB1	27.5	35.2	27	50.5
LF9Z-1MA1	55	37.9	33	80

All dimensions in mm.

LF Series LED Illumination Units

⚠ Safety Precautions

- Do not disassemble, repair, or modify the LED illumination unit. Otherwise electric shock, fire, or malfunction may occur.
- Turn off power before wiring. Make sure of correct wiring, otherwise electric shock or damage may result.
- Do not stare directly into the LED illumination unit while it is lit, and do not project the light to other people, otherwise eyes may be injured.
- LED illumination unit is general-purpose industrial electric device. Do not use for electronic equipment which may damage the human body or threaten life in case a malfunction or failure occurs.
- Ensure that the cable does not touch the LED illumination unit.

Instructions

- LED modules may vary in illumination colors and illuminance.
- Before designing equipment and powering up illumination units, confirm the specifications described in the instruction sheet.
- Apply voltage within the rated value, otherwise the LED elements may be damaged.
- The illumination unit is vulnerable to static electricity. Take sufficient measure for protection against static electricity and voltage surges.
- Make sure that the illumination unit does not fall during transportation, installation, and operation, otherwise damage may result.
- Do not pull or push the cable of the illumination unit, otherwise damage may result. Allow sufficient slack to the cable while wiring.
- Do not apply excessive force. Do not leave a damaged illumination unit unattended or use a damaged illumination unit.
- Ensure the correct operating temperature. Otherwise internal temperature rise may result in damage.
- Do not use or store in a place subjected to vibration and shock.
- Do not use in the following places:
 - * Exposed to direct sunlight, near heaters, high temperatures
 - * Subject to chemicals, and corrosive gases (Plastic illumination surface: Iron powder and oil)
 - * Basements, greenhouses, or other humid places
 - * Cold storage warehouses (make sure that no freezing occurs)
- Do not loosen screws, otherwise the protection characteristics will be impaired.
- For the LF2D illumination units, make sure to provide sufficient strength for mounting panel. Required waterproof characteristics cannot be obtained if a distorted mounting panel is used.
- To clean the cover, use a soft cloth with water or neutral detergent. Do not use solvents such as thinners, benzene, or alkaline, otherwise discoloration, deterioration, or decrease in strength may occur.
- The edge of the cable sheath is not waterproof construction. Water may invade the LF1B in a capillary action when water splashes directly onto the cable sheath.