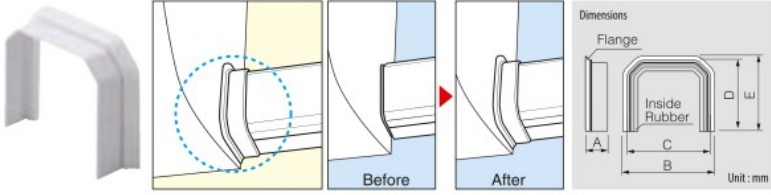


## MS

## GASKET



Item No.	Color Variation	A	B	C	D	E	Pcs/Pkg
MS-75	□	24.5	90	82	70	74	20
MS-85	□	24.5	100	92	75	79	20

\*Material ... Main part : PVC Flange : Synthetic rubber  
 \*The MS may not be suitable for use with indoor A/C units from all manufacturers. A crevice is made when installation to an attachment part with level difference or the curved surface beyond R25.

## MCI

## 90° INSIDE VERTICAL ELL



Item No.	Color Variation	A	B	C	Pcs/Pkg
MCI-75-W	□	80	90	43	20
MCI-85	□	90	94	54	10

## MCO

## 90° OUTSIDE VERTICAL ELL



Item No.	Color Variation	A	B	C	Pcs/Pkg
MCO-75-W	□	80	68	103	20
MCO-85	□	90	73	109	10

## MKF

## 45° FLAT ELL



Item No.	Color Variation	A	B	C	D	Pcs/Pkg
MKF-75-W	□	80	70	63	30	20
MKF-85	□	90	75	68	31	10

## MT

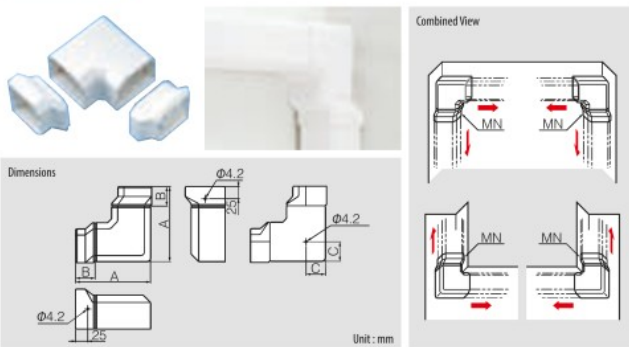
## TEE



Item No.	Color Variation	A	B	C	D	Pcs/Pkg
MT-75-W	□	80	68	105	105	10
MT-85	□	90	73	115	115	10

## MN

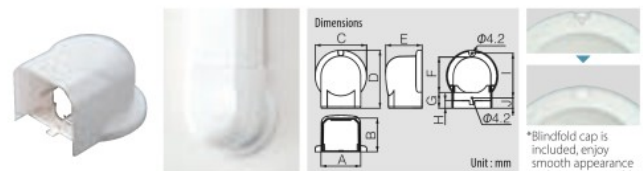
## 90° TWIST ELBOW



Item No.	Color Variation	A	B	C	Pcs/Pkg
MN-75-W	□	154	40	40	5
MN-85	□	169	45	45	5

## MW

## WALL INLET



Item No.	Color Variation	A	B	C	D	E	F	G	H	I	J	Pcs/Pkg
MW-75-W	□	80	67.5	103	116	73	71	31	15	90	20	20
MW-85	□	90	72.5	123	128.5	76	83	27	15	102.5	20	10

## SLIMDUCT MD series

### Specifications

Temperature Range	-20 ~ 60°C
Application	Wall Mounted
Material	Rigid Polyvinyl Chloride (Flame Retardant) *Excludes some items

The table below shows the maximum size piping combinations that can be run in SLIMDUCT MD :

Item No.	Insulation Thickness
MD-751-W	10×10mm
MD-851	6.35×9.52 - 6.35×12.70 + DSH-14 + 6.35×9.52 - 6.35×12.70 + DSH-14 or 6.35×9.52 - 9.52×15.88 + DSH-14