

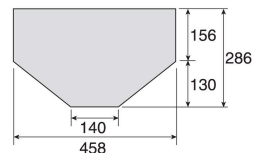
# SG-106 SAND BLASTER 100 V

- Using compressed air, this unit sprays abrasives. It can be used for glass etching, for shot-blasting metal products, and for rust removal and deburring, etc.
- After connecting the abrasive tank, air compressor, and vacuum cleaner, then press a foot-valve to automatically execute the complete operation cycle which includes sucking up the abrasives, spraying it, and recovering it.

Blaster gun	Nozzle dia.	2.5 mmφ
	Nozzle material	Ceramic
	Air consumption amount	66 L/min (at 0.5 MPa)
Prescribed air pressure	0.5 to 0.8 Mpa	
Prescribed air compressor	For intermittent use	0.5 kW or higher
	For continuous use	0.75 kW or higher
Rated voltage / frequency	100 VAC, 50 / 60 Hz	
Lighting	100 V, 20 W straight fluorescent lamp	
Body material	Polyethylene	
External dimensions	640 (W) × 1360 (H) × 603 (D) mm	
Weight	24.2 kg	

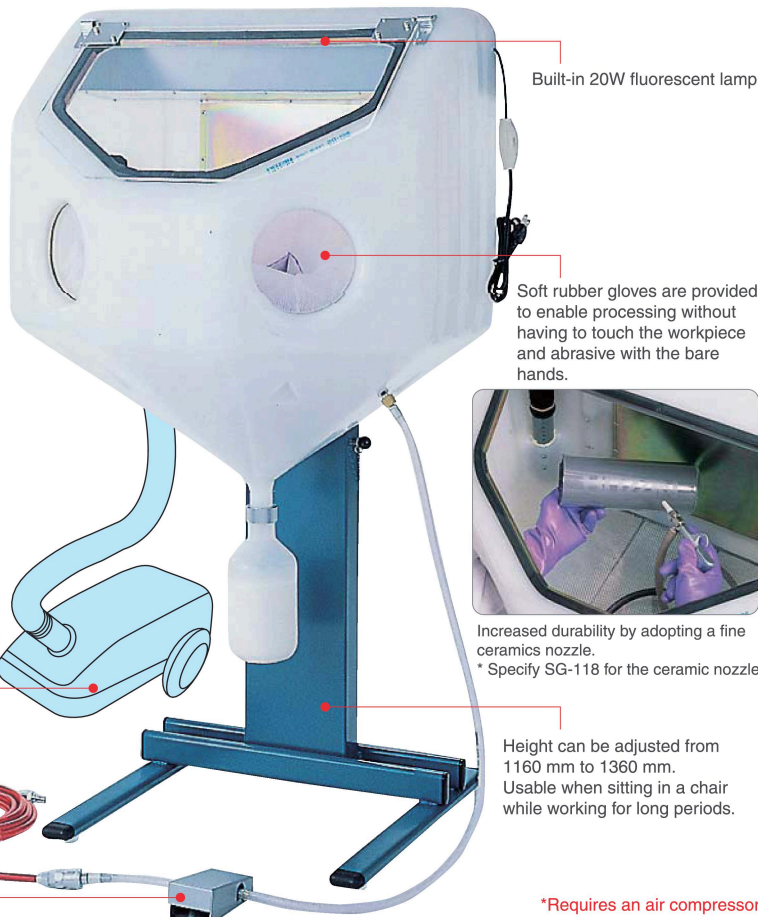
- Power cable: 1.4m
- Accessories: Foot-valve / blaster gun / air hose (5m, with fixture) / abrasive (WA#80 x 1.5 kg) / 3 hatch protectors.

[Window shape]



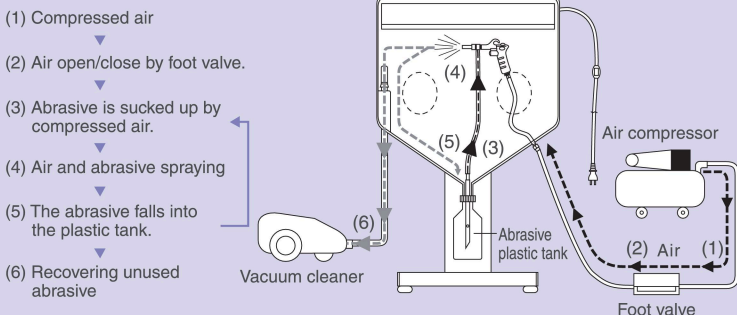
A standard household vacuum cleaner can be used.

With foot valve. Compressed air open/close can be controlled by one foot.



\*Requires an air compressor.

[Abrasive media suction & spraying flow]



■ Result example



Stone sculpting (#60 abrasive used)



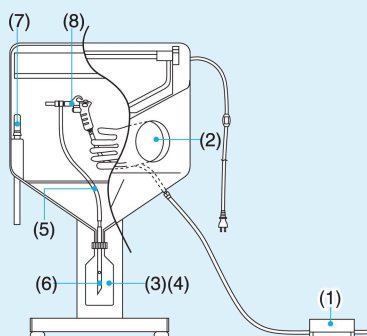
Surface preparation before painting (#120 abrasive used)

An instruction video is available on our website for your reference. <http://www.hozan.co.jp/animation/>

■ Replacement parts

SAND BLASTER / BLASTER GUN PARTS

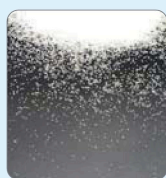
Part no.	Part no.	Part name
(1)	SG-112	Foot valve
(2)	SG-115	Rubber gloves
(3)	SG-116	Abrasive (#80 / in 1.5 kg plastic tank)
(4)	SG-106-9	Bottle for Abrasive
(5)	SG-106-1	Suction hose
(6)	SG-106-2	Suction pipe
(7)	SG-106-3	Exhaust filter
(8)	SG-120	Blaster gun
(9)	SG-118	Nozzle set
(10)	SG-119	Ejector



ABRASIVE RoHS

- Weight: 5 kg
- With plastic tank for the abrasive.

Part no.	Grid
SG-118-60	#60
SG-118-80	#80
SG-118-100	#100
SG-118-120	#120
SG-118-150	#150
SG-118-180	#180
SG-118-220	#220

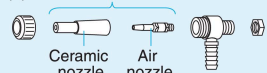


SG-116 ABRASIVE (alumina WA #80)

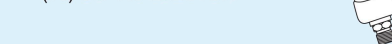
Blaster gun parts ((8) SG-120)

(8) SG-120 BLASTER GUN PARTS

(9) SG-118 NOZZLE SET



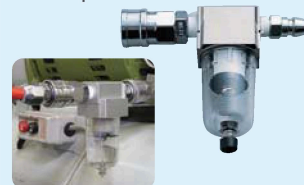
(10) SG-119 EJECTOR



■ Optional items

SG-117 AIR FILTER

- Simply connect this product between the compressor and the main unit to remove moisture from the compressed air.



Example of SG-117 use

SG-120-1 AIR VALVE

- The valve can be operated by hand when attached to the blaster gun. The foot-valve must be in an "open" during use.

