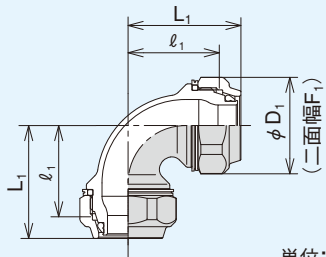


品種・サイズ

[ナット形状は、呼び方13~25Suは六角、呼び方30~60Suは八角です。]

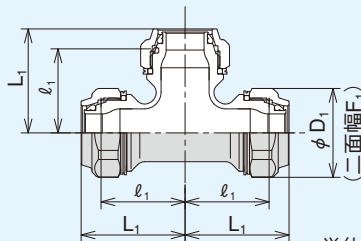
●エルボ (ZLL)



単位:mm

呼び方 (Su)	L1	l1	φD1 (二面幅F1)
13	38.5	30	30.5 (28)
20	43.5	35	37 (34)
25	48.5	40	45 (41)
30	61	50	52 (49.5)
40	66	55	61.5 (58.5)
50	71	60	66 (62.5)
60	76	65	79 (75)

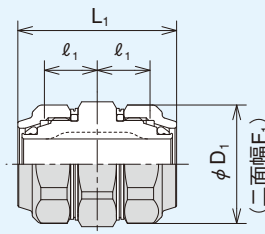
●T (ZLT)



単位:mm

呼び方 (Su)	L1	l1	φD1 (二面幅F1)
13	38.5	30	30.5 (28)
20	43.5	35	37 (34)
25	48.5	40	45 (41)
30	61	50	52 (49.5)
40	66	55	61.5 (58.5)
50	71	60	66 (62.5)
60	76	65	79 (75)

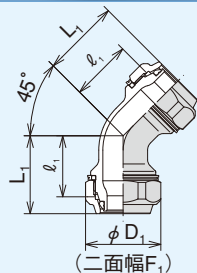
●ソケット (ZLS)



単位:mm

呼び方 (Su)	L1	l1	φD1 (二面幅F1)
13	50	16.5	30.5 (28)
20	50	16.5	37 (34)
25	50	16.5	45 (41)
30	62	20	52 (49.5)
40	62	20	61.5 (58.5)
50	62	20	66 (62.5)
60	62	20	79 (75)

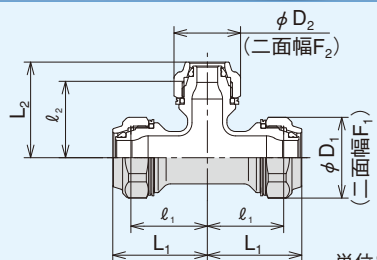
●45°エルボ (ZLL45)



単位:mm

呼び方 (Su)	L1	l1	φD1 (二面幅F1)
13	33.5	25	30.5 (28)
20	38.5	30	37 (34)
25	43.5	35	45 (41)
30	56	45	52 (49.5)
40	61	50	61.5 (58.5)
50	66	55	66 (62.5)
60	71	60	79 (75)

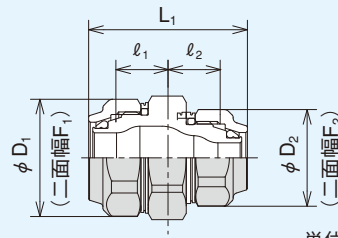
●径違いT (ZLRT)



単位:mm

呼び方 (Su)	L1	l1	L2	l2	φD1 (二面幅F1)	φD2 (二面幅F2)
20×13	43.5	35	43.5	35	37 (34)	30.5 (28)
25×13	48.5	40	48.5	40	45 (41)	30.5 (28)
25×20	48.5	40	48.5	40	45 (41)	37 (34)
30×13	61	50	61.5	53	52 (49.5)	30.5 (28)
30×20	61	50	61.5	53	52 (49.5)	37 (34)
30×25	61	50	61.5	53	52 (49.5)	45 (41)
40×13	66	55	66.5	58	61.5 (58.5)	30.5 (28)
40×20	66	55	66.5	58	61.5 (58.5)	37 (34)
40×25	66	55	66.5	58	61.5 (58.5)	45 (41)
40×30	66	55	66	55	61.5 (58.5)	52 (49.5)
50×13	71	60	71.5	63	66 (62.5)	30.5 (28)
50×20	71	60	71.5	63	66 (62.5)	37 (34)
50×25	71	60	71.5	63	66 (62.5)	45 (41)
50×30	71	60	71	60	66 (62.5)	52 (49.5)
50×40	71	60	71	60	66 (62.5)	61.5 (58.5)
60×20	76	65	76.5	68	79 (75)	37 (34)
60×25	76	65	76.5	68	79 (75)	45 (41)
60×30	76	65	76	65	79 (75)	52 (49.5)
60×40	76	65	76	65	79 (75)	61.5 (58.5)
60×50	76	65	76	65	79 (75)	66 (62.5)

●径違いソケット (ZLRS)



単位:mm

呼び方 (Su)	L1	l1	l2	φD1 (二面幅F1)	φD2 (二面幅F2)
20×13	50	16.5	16.5	37 (34)	30.5 (28)
25×13	50	16.5	16.5	45 (41)	30.5 (28)
25×20	50	16.5	16.5	45 (41)	37 (34)
30×13	56	20	16.5	52 (49.5)	30.5 (28)
30×20	56	20	16.5	52 (49.5)	37 (34)
30×25	56	20	16.5	52 (49.5)	45 (41)
40×13	56	20	16.5	61.5 (58.5)	30.5 (28)
40×20	56	20	16.5	61.5 (58.5)	37 (34)
40×25	56	20	16.5	61.5 (58.5)	45 (41)
40×30	62	20	20	61.5 (58.5)	52 (49.5)
50×20	56	20	16.5	66 (62.5)	37 (34)
50×25	56	20	16.5	66 (62.5)	45 (41)
50×30	62	20	20	66 (62.5)	52 (49.5)
50×40	62	20	20	66 (62.5)	61.5 (58.5)
60×20	56	20	16.5	79 (75)	37 (34)
60×25	56	20	16.5	79 (75)	45 (41)
60×30	62	20	20	79 (75)	52 (49.5)
60×40	62	20	20	79 (75)	61.5 (58.5)
60×50	62	20	20	79 (75)	66 (62.5)