

1832-series For 22-wide groove

2444-series For 28-wide groove



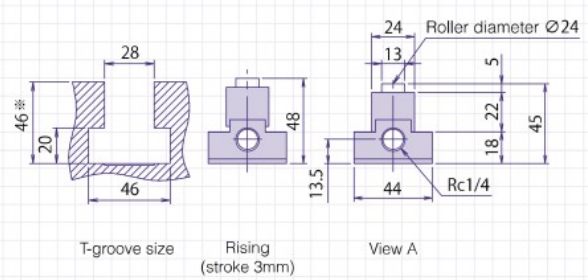
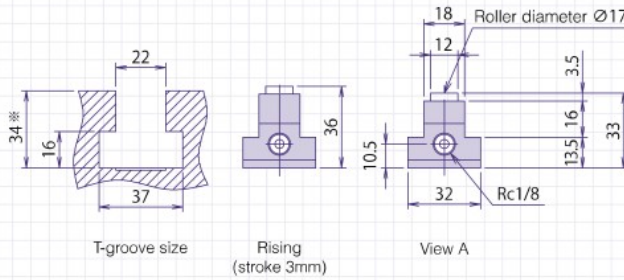
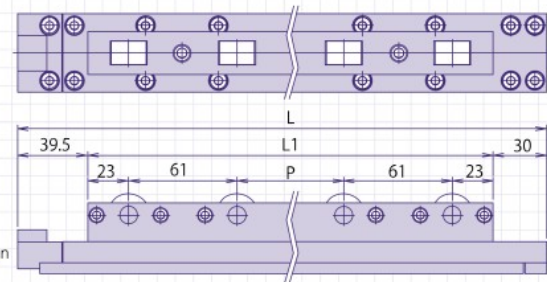
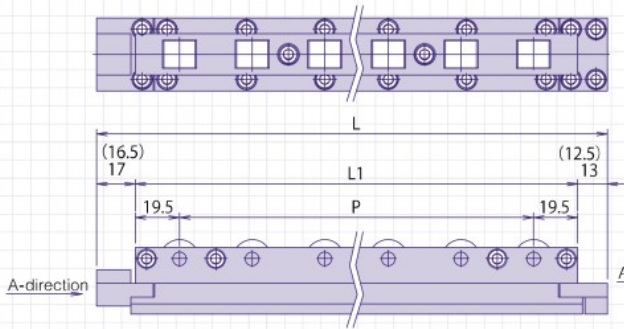
Sizes other than shown below are also available. Please specify the details in the inquiry sheet of P30.

Spring return type (lowered by means of exhaust)



■ ARU-1832 (For 22-wide groove) ※The size in ( ) is for ARU-1832-580.

■ ARU-2444 (For 28-wide groove)



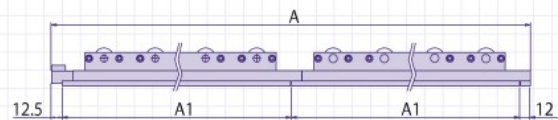
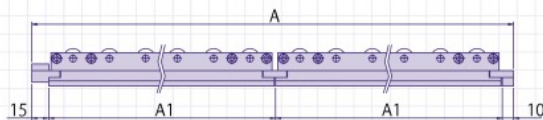
※If the T-groove is deeper than 34mm or 46mm, you need to adjust the height by installing a spacer underneath the ARU. In such case, make sure that the ball extrudes 2mm from the upper surface of the bolster when the ARU rises. We can provide various types of spacers.

Calculation formula of full length ARU-1832 series :  $A=25+(\text{Sum of } A1)$

※Only the same series can be connected with each other. 1832 series cannot be connected with 2444 series.

Calculation formula of full length ARU-2444 series :  $A=24.5+(\text{Sum of } A1)$

※Only the same series can be connected with each other. 1832 series cannot be connected with 2444 series.



(Unit:mm)

Model	Body size (mm)				Weight (kg)	Relation of air pressure and load capacity kN (kgf)			
	L	L1	A1	P		One piece of AFU			
						Operating air pressure MPa (kgf/cm <sup>2</sup> )			
ARU-1832-325	325	295	300	8 × P32 = 256	1.5	0.30 (3.1)	0.40 (4.1)	0.50 (5.1)	0.60 (6.1)
ARU-1832-580	580	551	555	16 × P32 = 512	2.7	0.98 (100.0)	1.18 (120.3)	1.57 (160.1)	1.96 (199.9)
ARU-2444-300	297.5	228	273	1 × P60 = 60	2.4	1.96 (199.9)	2.36 (240.7)	3.14 (320.2)	3.92 (399.7)
ARU-2444-540	537.5	468	513	5 × P60 = 300	4.5	1.23 (124.9)	1.47 (149.9)	1.96 (199.9)	2.45 (249.8)
						2.46 (250.1)	2.94 (299.8)	3.92 (399.8)	4.91 (500.1)