

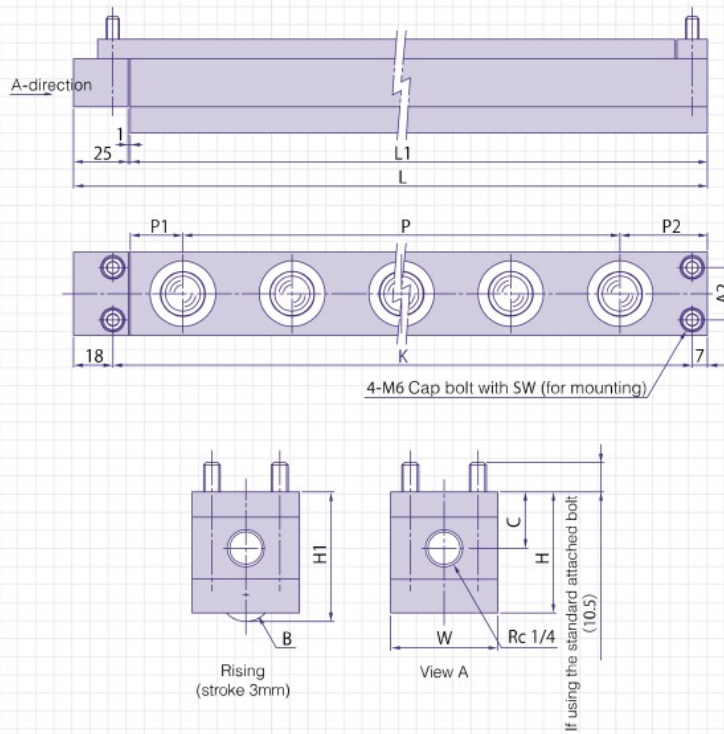


AFU-3843D-5



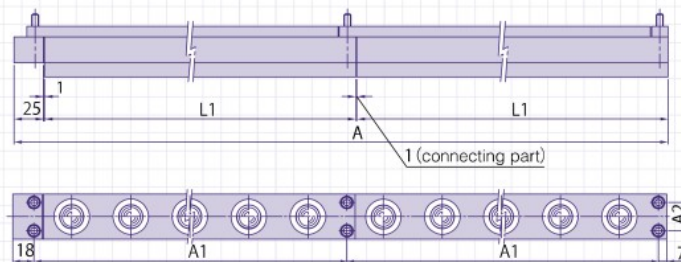
AFU-5057D-5

■ AFU-3843D / AFU-5057D



Calculation formula of full length $A = 25 + (\text{Sum of } L1) + (\text{Number of connections})$

※ The same series can be connected with each other. 3843 series cannot be connected with 5057 series.



(Unit: mm)

Model	Body size (mm)											Weight (kg)	Relation of air pressure and load capacity kN (kgf)								
	H	H1	W	C	L	L1	P	P1	P2	A1	A2		B	One piece of AFU				One freebear			
													Operating air pressure MPa (kgf/cm ²)				Operating air pressure MPa (kgf/cm ²)				
AFU-3843D-5					290	264	4 × P50 = 200					3.2	0.30 (3.1)	0.40 (4.1)	0.50 (5.1)	0.60 (6.1)	0.30 (3.1)	0.40 (4.1)	0.50 (5.1)	0.60 (6.1)	
AFU-3843D-10	43	46	38	20	540	514	9 × P50 = 450	24	40		265	6.0	1.95 (198.9)	2.30 (234.5)	3.10 (316.1)	3.90 (397.7)	(19.9)	(23.5)	(31.6)	(39.8)	
AFU-5057D-5					300	274	4 × P50 = 200					5.8	1.75 (178.5)	2.35 (239.6)	2.90 (295.7)	3.50 (356.9)	0.35	0.47	0.58	0.70	
AFU-5057D-10	57	60	50	25	550	524	9 × P50 = 450	28	46		275	10.0	3.50 (356.9)	4.70 (479.3)	5.80 (591.4)	7.00 (713.8)	(35.7)	(47.9)	(59.1)	(71.4)	