

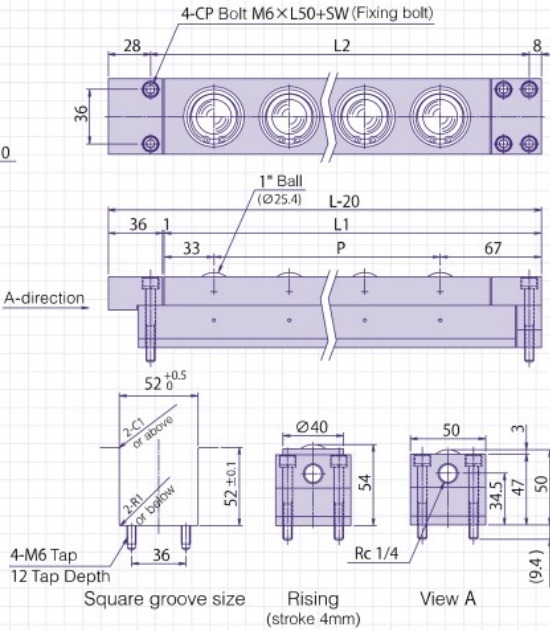
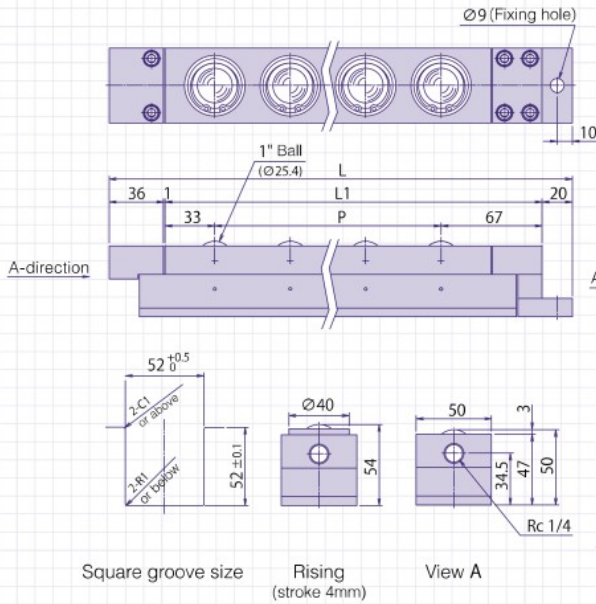
(Lowered by means of mold weight or forced exhaust)



* For the fixing method, please choose from standard or 4-point fixed type

■ Standard (fixing method : only Ø9)

■ 4-point fixed type (fixing method: fixed with four M6 cap bolts)



■ Connection dimension diagram

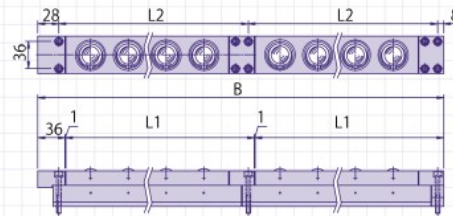
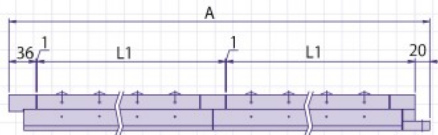
■ Connection dimension diagram

AFU-5050W Standard

AFU-5050W 4-point fixing

Calculation formula of full length A=56+ (Sum of L1) + (Number of connections)

Calculation formula of full length B=36+ (Sum of L1) + (Number of connections)



(Unit: mm)

Model	Body size (mm)				Weight (kg)	Relation of air pressure and load capacity kN (kgf)							
	L	L1	L2	P		One piece of AFU				One freebear			
						Operating air pressure MPa (kgf/cm ²)				Operating air pressure MPa (kgf/cm ²)			
AFU-5050W-1	157	100	101	—	2.1	0.30 (3.1)	0.40 (4.1)	0.50 (5.1)	0.60 (6.1)	0.30 (3.1)	0.40 (4.1)	0.50 (5.1)	0.60 (6.1)
AFU-5050W-2	207	150	151	50	2.9	1.53 (156.0)	2.04 (208.0)	2.56 (261.0)	3.06 (312.0)				
AFU-5050W-3	257	200	201	2 × P50 = 100	3.6	2.30 (234.0)	3.06 (312.0)	3.84 (391.6)	4.59 (468.0)				
AFU-5050W-4	307	250	251	3 × P50 = 150	4.4	3.06 (312.1)	4.08 (416.0)	5.12 (522.1)	6.12 (624.1)				
AFU-5050W-5	357	300	301	4 × P50 = 200	5.2	3.83 (390.1)	5.10 (520.1)	6.40 (652.6)	7.65 (780.1)				
AFU-5050W-6	407	350	351	5 × P50 = 250	5.9	4.59 (468.1)	6.12 (624.1)	7.68 (783.1)	9.18 (936.1)				
AFU-5050W-7	457	400	401	6 × P50 = 300	6.6	5.36 (546.1)	7.14 (728.1)	8.96 (913.7)	10.71 (1,092.1)				
AFU-5050W-8	507	450	451	7 × P50 = 350	7.4	6.12 (624.1)	8.16 (832.1)	10.24 (1,044.2)	12.24 (1,248.1)				
AFU-5050W-9	557	500	501	8 × P50 = 400	8.1	6.89 (702.0)	9.18 (936.1)	11.52 (1,174.7)	13.77 (1,404.0)	0.77 (78.0)	1.02 (104.0)	1.28 (130.5)	1.53 (156.0)
AFU-5050W-10	607	550	551	9 × P50 = 450	8.9	7.65 (780.1)	10.20 (1,040.1)	12.80 (1,305.2)	15.30 (1,560.2)				
AFU-5050W-11	657	600	601	10 × P50 = 500	9.7	8.42 (858.1)	11.22 (1,144.1)	14.08 (1,435.8)	16.83 (1,716.2)				
AFU-5050W-12	707	650	651	11 × P50 = 550	10.4	9.18 (936.1)	12.24 (1,248.1)	15.36 (1,566.3)	18.36 (1,872.1)				
AFU-5050W-13	757	700	701	12 × P50 = 600	11.2	9.95 (1,014.1)	13.26 (1,352.1)	16.64 (1,696.8)	19.89 (2,028.2)				
AFU-5050W-14	807	750	751	13 × P50 = 650	12.0	10.71 (1,092.1)	14.28 (1,456.1)	17.92 (1,827.3)	21.42 (2,184.2)				
AFU-5050W-15	857	800	801	14 × P50 = 700	12.7	11.48 (1,170.1)	15.30 (1,560.2)	19.20 (1,957.8)	22.95 (2,340.2)				
AFU-5050W-16	907	850	851	15 × P50 = 750	13.5	12.24 (1,248.2)	16.32 (1,664.2)	20.48 (2,088.4)	24.48 (2,496.3)				
AFU-5050W-17	957	900	901	16 × P50 = 800	14.2	13.01 (1,326.2)	17.34 (1,768.2)	21.76 (2,218.9)	26.01 (2,652.3)				
AFU-5050W-18	1,007	950	951	17 × P50 = 850	15.0	13.77 (1,404.2)	18.36 (1,872.2)	23.04 (2,349.4)	27.54 (2,808.3)				

* The load capacity of standard product is the same as 4-point fixed type. ** The body size (L) of 4-point fixed type is 20mm smaller than standard product.