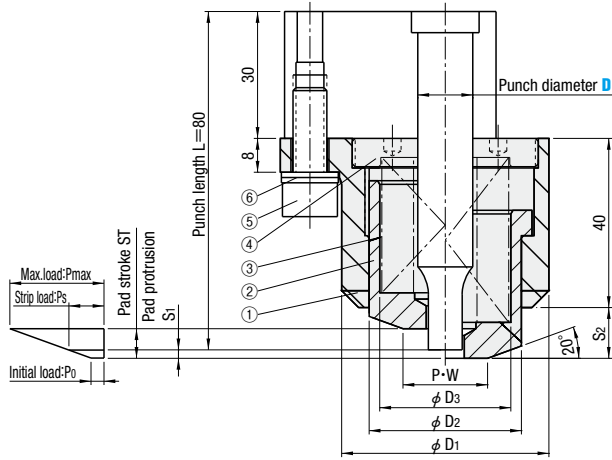
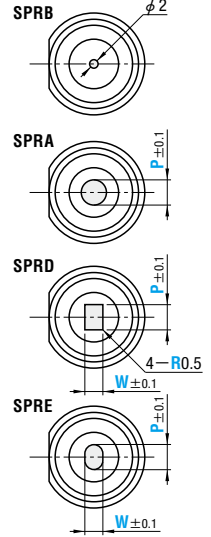


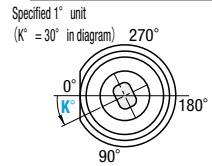
# STEEL PAD UNIT



Shape of the hole of the steel pad

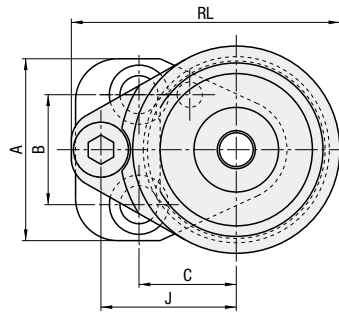


Change in punch hole position of the steel pad



- ① Case
  - M S45C
  - S Black oxide (Inside : Induction-hardened)
- ② Steel pad
  - M S45C
  - S D16, 20 Nitriding
- ③ Coil spring
  - M SWOSC-V
- ④ Locating ring
  - M S45C
  - H 34 ~ 40HRC
  - S Black oxide
- ⑤ Hexagon socket head cap screw CB8-22
- ⑥ Loosening prevention washer NLDP8

- ⑦ Punch and retainer are separate sale.
- ⑧ Set the hole diameter P and W dimensions of the steel pad such that they are 1mm greater than the punch diameter.
- ⑨ The customers are requested to process the nose shape of the steel pad at their end.
- ⑩ Set the penetration length of the punch at or below 5mm.



Applicable punch D	D1	D2	D3	S1	S2	RL	Retainer				Catalog No.		Load	0.1mm increments		1°increments	Base unit price 1~9sets				
							A	B	C	J	Type	D		SPRA	SPRD-SPRE	Pad hole position K°	SPRB (Blank)	SPRA	SPRD-SPRE		
10	40	28	16	2	12	56	37	20	21	29	SPRB SPRA SPRD SPRE	10	F	3.0~11.0	3.0~11.0	0 ≤ K ≤ 359	D-E type only	Quotation			
13	49	36	20			63.5	43	26	23	32		13	L	3.0~14.0	3.0~14.0						
16	54	41	25			68	44	24	26	34		16	M	3.0~17.0	3.0~17.0						
20	57	45	25			71.5	48	28	27	36		20	H B G	3.0~21.0	3.0~21.0						

- ⑪ Determine the load based on the selected spring.
- ⑫ Use B of the dedicated spring for D20.

Order  -  -  -

SPRA13 - H - P9 - - -

SPRE16 - G - P11 - W5 - K20

SPRB10 - G - - - - -

Days to Ship

Price