

Bucket Elevator Parts

■ Polyester belt

(Unit: mm)

No. of plies	Width	Thickness	Tensile strength (kg/cm)
2P	75, 100, 125, 150, 175	3.3	189
3P	200, 225, 250, 300	4.8	260

■ Polyester belt (non-woven fabric)

(Unit: mm)

No. of plies	Width	Thickness	Tensile strength (kg/cm)
3P	150	5	290
4P	200	5.8	380
5P	250, 300, 350	6.7	440

■ Polyester/vinyl belt (non-woven fabric)

(Unit: mm)

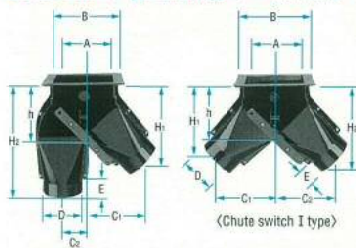
No. of plies	Width	Thickness	Tensile strength (kg/cm)
2P	75, 100, 125, 150, 175, 200	3.9	250

■ Cotton belt

(Unit: mm)

No. of plies	Width	Thickness	Tensile strength (kg/cm)
3P	100, 125, 150	3.5	120
4P	150, 175, 200, 250, 300, 350	4.5	165

■ Chute outlet (I type and II type)—Dimensions



<Chute switch II type>

■ Chute switch (nylon)—Specifications

(Unit: mm)

Type	A	B	C1	C2	D	E	h	H1	H2	Color	
I type	4"	145	195	145	145	98	30	132	198	232	White
	5"	177	227	145	145	98	30	187	253	287	White
	5"	202	251	145	145	98	30	194	265	299	White
II type	4"	145	195	135	61	98	30	132	204	285	White
	5"	177	227	135	61	98	30	187	259	340	White
	5"	202	251	135	61	98	30	194	271	352	White

Because the chute switch is made of nylon, noise made by falling rice, for instance, is greatly reduced compared to a metal unit, making the entire system quieter. Nylon is also very smooth, so grains such as bran won't stick to the surface.

■ Chute outlet (round port type)—Dimensions



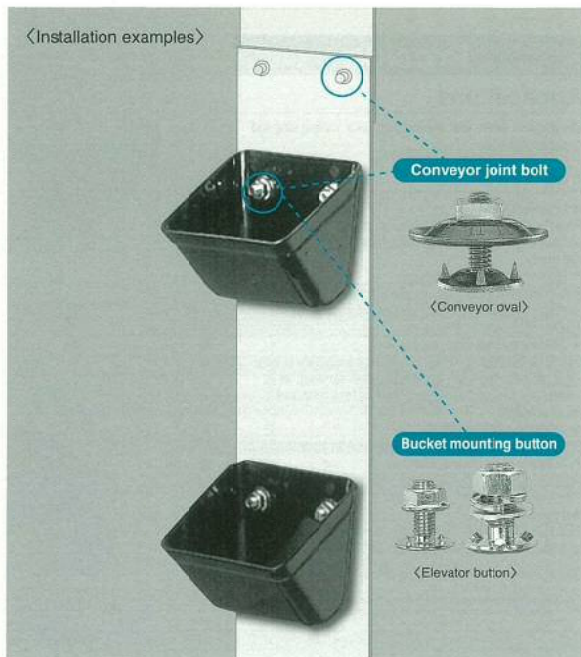
<Chute outlet>

■ Chute outlet (nylon)—Specifications

(Unit: mm)

Type	A	B	C	H1	H2	Color
4"	145	166	98	73	30	White
5"	177	225	98	122	43	White

<Installation examples>



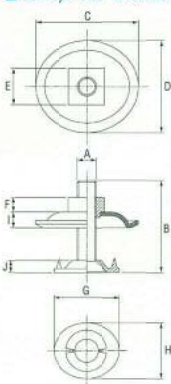
Conveyor joint bolt

<Conveyor oval>

Bucket mounting button

<Elevator button>

■ Conveyor oval—Dimensions



■ Conveyor oval (steel)—Specifications

(Unit: mm)

Type	Bolt dia.	A	B	C	D	E	F	G	H	I	J
1/4x25	W1/4	25	37	34	12.5	4.5	23	20	5.7	4.1	
3/16x32	W5/16	32	42	38	15	6	27	23	6.5	5.2	
3/16x38	W5/16	38	42	38	15	6	27	23	6.5	5.2	
3/8x38	W3/8	38	48	42	17	8	30	25	6.7	5.4	
3/8x45	W3/8	45	48	42	17	8	30	25	6.7	5.4	

(Bolt dia. in inches)

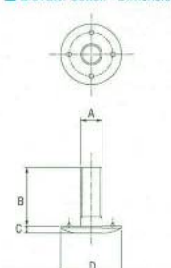
■ Conveyor oval (stainless steel)—Specifications

(Unit: mm)

Type	Bolt dia.	A	B	C	D	E	F	G	H	I	J
1/4x32	W5/16	32	42	38	14	6	27	23	6.5	5.2	
3/16x38	W3/8	38	48	42	17	8	30	25	6.7	5.4	
3/8x45	W3/8	45	48	42	17	8	30	25	6.7	5.4	

(Bolt dia. in inches)

■ Elevator button—Dimensions



■ Elevator button (trivalent chrome plated)—Specifications

(Unit: mm)

Type	Bolt dia.	A	B	C	D	Nut
M6x12	M6	12	2	16	Plate	
M6x16	M6	16	2	16	Flange	
M8x20	M8	20	2.6	20	Hexagon	
M8x25	M8	25	2.6	20	Hexagon	

Trivalent chrome plating is for bolts only.

■ Elevator button (stainless steel)—Specifications

(Unit: mm)

Type	Bolt dia.	A	B	C	D	Nut
M6x16	M6	16	2	16	Hexagon	
M8x20	M8	20	2.6	20	Hexagon	
M8x25	M8	25	2.6	20	Hexagon	