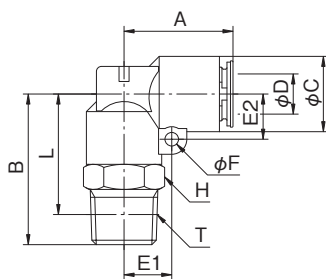


# タッチコネクター FUJI

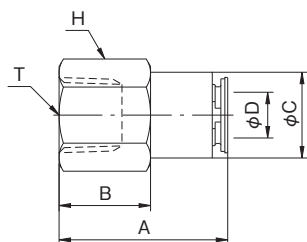
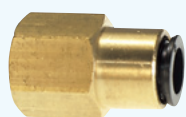
## TOUCH CONNECTOR FUJI

### メイルエルボ [樹脂] MALE ELBOW [RESIN BODY]



型式 Model	A	B	φC	適用 チューブ 外径 Tube O. D. φD	E1	E2	φF	二面幅 Spanner Flats H	L	ねじサイズ Thread T	チューブ 挿入寸法 Tube Insertion Depth	重量 Weight (g)
4R-M5ML	17.7	21.0	11.0	4	7.1	6.5	2.7	10.0	17.5	M5×0.8	15.0	10.0
4R-01ML	17.7	25.0	11.0	4	7.1	6.5	2.7	10.0	21.0	R1/8	15.0	14.0
4R-02ML	17.7	28.0	11.0	4	7.1	6.5	2.7	14.0	22.0	R1/4	15.0	19.0
6R-M5ML	19.5	23.0	13.0	6	8.3	7.5	2.7	12.0	19.5	M5×0.8	16.3	13.0
6R-01ML	19.5	26.0	13.0	6	8.3	7.5	2.7	12.0	22.0	R1/8	16.3	17.5
6R-02ML	19.5	29.0	13.0	6	8.3	7.5	2.7	14.0	23.0	R1/4	16.3	20.5
6R-03ML	19.5	30.0	13.0	6	8.3	7.5	2.7	17.0	23.6	R3/8	16.3	27.5
8R-01ML	21.7	27.0	15.0	8	9.5	9.0	2.7	14.0	23.0	R1/8	17.5	22.5
8R-02ML	21.7	30.0	15.0	8	9.5	9.0	2.7	14.0	24.0	R1/4	17.5	26.5
8R-03ML	21.7	31.0	15.0	8	9.5	9.0	2.7	17.0	24.6	R3/8	17.5	31.0
10R-01ML	23.5	28.0	17.0	10	10.5	10.0	2.7	17.0	24.0	R1/8	18.3	26.0
10R-02ML	23.5	31.0	17.0	10	10.5	10.0	2.7	17.0	25.0	R1/4	18.3	29.5
10R-03ML	23.5	32.0	17.0	10	10.5	10.0	2.7	17.0	25.6	R3/8	18.3	33.5
10R-04ML	23.5	36.0	17.0	10	10.5	10.0	2.7	21.0	28.0	R1/2	18.3	50.0
12R-02ML	25.6	34.5	20.0	12	12.0	11.5	4.0	19.0	28.5	R1/4	19.4	42.0
12R-03ML	25.6	35.5	20.0	12	12.0	11.5	4.0	19.0	29.1	R3/8	19.4	46.0
12R-04ML	25.6	38.5	20.0	12	12.0	11.5	4.0	21.0	30.5	R1/2	19.4	58.0

### フィメイルコネクター [金属] FEMALE CONNECTOR [METAL BODY]



型式 Model	A	B	φC	適用 チューブ 外径 Tube O. D. φD	二面幅 Spanner Flats H	ねじサイズ Thread T	チューブ 挿入寸法 Tube Insertion Depth	重量 Weight (g)
4-01F	24.5	13.0	11.0	4	12.0	Rc1/8	15.0	13.5
4-02F	27.5	15.0	11.0	4	17.0	Rc1/4	15.0	26.0
6-01F	25.8	14.0	13.0	6	14.0	Rc1/8	16.3	20.0
6-02F	28.8	16.0	13.0	6	17.0	Rc1/4	16.3	29.0
6-03F	29.8	16.0	13.0	6	21.0	Rc3/8	16.3	39.5
8-01F	26.5	14.0	15.0	8	17.0	Rc1/8	17.0	30.5
8-02F	29.5	16.0	15.0	8	17.0	Rc1/4	17.0	30.0
8-03F	30.5	17.0	15.0	8	21.0	Rc3/8	17.0	42.5
10-02F	30.3	16.0	17.0	10	17.0	Rc1/4	17.8	30.5
10-03F	31.3	17.0	17.0	10	21.0	Rc3/8	17.8	43.0
10-04F	34.3	19.0	17.0	10	24.0	Rc1/2	17.8	53.0
12-02F	31.9	17.0	19.0	12	19.0	Rc1/4	19.4	40.0
12-03F	32.9	18.0	19.0	12	21.0	Rc3/8	19.4	45.5
12-04F	35.9	19.5	19.0	12	24.0	Rc1/2	19.4	56.5