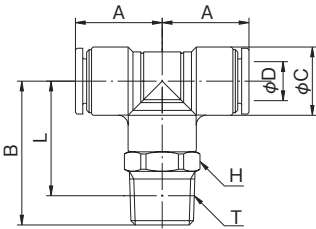


タッチコネクタファイブ SUS

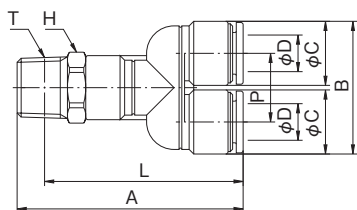
TOUCH CONNECTOR FIVE SUS

メイルブランチティ MALE BRANCH TEE



| 型式 Model | | A | B | φC | 適用 チューブ 外径 Tube O. D. φD | 二面幅 Spanner Flats H | L | ねじサイズ Thread T (おねじ) | チューブ 挿入寸法 Tube Insertion Depth | 重量 Weight (g) |
|--------------------|--------------------|------|------|------|--------------------------------------|------------------------------|------|-------------------------------|--|---------------------|
| 本体色黒 Black body | 本体色白 White body | | | | | | | | | |
| FS4-M5MT | FS4-M5MTW | 14.8 | 19.0 | 10.0 | 4 | 10.0 | 16.0 | M5×0.8 | 12.0 | 5.9 |
| FS4-01MT | FS4-01MTW | 14.8 | 22.5 | 10.0 | 4 | 10.0 | 18.5 | R1/8 | 12.0 | 8.8 |
| FS4-02MT | FS4-02MTW | 14.8 | 26.5 | 10.0 | 4 | 14.0 | 20.5 | R1/4 | 12.0 | 18.0 |
| FS6-M5MT | FS6-M5MTW | 15.8 | 20.0 | 12.0 | 6 | 12.0 | 17.0 | M5×0.8 | 12.5 | 7.9 |
| FS6-01MT | FS6-01MTW | 15.8 | 24.5 | 12.0 | 6 | 12.0 | 20.5 | R1/8 | 12.5 | 10.8 |
| FS6-02MT | FS6-02MTW | 15.8 | 27.5 | 12.0 | 6 | 14.0 | 21.5 | R1/4 | 12.5 | 18.0 |
| FS6-03MT | FS6-03MTW | 15.8 | 29.5 | 12.0 | 6 | 17.0 | 23.1 | R3/8 | 12.5 | 30.1 |
| FS8-01MT | FS8-01MTW | 17.8 | 26.5 | 14.0 | 8 | 14.0 | 22.5 | R1/8 | 13.7 | 14.3 |
| FS8-02MT | FS8-02MTW | 17.8 | 29.5 | 14.0 | 8 | 14.0 | 23.5 | R1/4 | 13.7 | 17.9 |
| FS8-03MT | FS8-03MTW | 17.8 | 31.5 | 14.0 | 8 | 17.0 | 25.1 | R3/8 | 13.7 | 29.8 |
| FS10-01MT | FS10-01MTW | 19.8 | 29.5 | 17.0 | 10 | 17.0 | 25.5 | R1/8 | 14.6 | 21.7 |
| FS10-02MT | FS10-02MTW | 19.8 | 32.5 | 17.0 | 10 | 17.0 | 26.5 | R1/4 | 14.6 | 24.9 |
| FS10-03MT | FS10-03MTW | 19.8 | 33.5 | 17.0 | 10 | 17.0 | 27.1 | R3/8 | 14.6 | 30.6 |
| FS10-04MT | FS10-04MTW | 19.8 | 36.5 | 17.0 | 10 | 21.0 | 28.5 | R1/2 | 14.6 | 51.5 |
| FS12-02MT | FS12-02MTW | 22.3 | 35.0 | 20.0 | 12 | 19.0 | 29.0 | R1/4 | 15.4 | 32.1 |
| FS12-03MT | FS12-03MTW | 22.3 | 36.0 | 20.0 | 12 | 21.0 | 29.6 | R3/8 | 15.4 | 38.5 |
| FS12-04MT | FS12-04MTW | 22.3 | 39.0 | 20.0 | 12 | 21.0 | 31.0 | R1/2 | 15.4 | 51.7 |

メイルブランチワイ MALE BRANCH Y



| 型式 Model | | A | B | φC | 適用 チューブ 外径 Tube O. D. φD | 二面幅 Spanner Flats H | L | P | ねじサイズ Thread T (おねじ) | チューブ 挿入寸法 Tube Insertion Depth | 重量 Weight (g) |
|--------------------|--------------------|------|------|------|--------------------------------------|------------------------------|------|------|-------------------------------|--|---------------------|
| 本体色黒 Black body | 本体色白 White body | | | | | | | | | | |
| FS4-M5MY | FS4-M5MYW | 35.8 | 20.8 | 10.0 | 4 | 10.0 | 32.8 | 10.8 | M5×0.8 | 12.0 | 6.3 |
| FS4-01MY | FS4-01MYW | 39.3 | 20.8 | 10.0 | 4 | 10.0 | 35.3 | 10.8 | R1/8 | 12.0 | 9.3 |
| FS4-02MY | FS4-02MYW | 43.3 | 20.8 | 10.0 | 4 | 14.0 | 37.3 | 10.8 | R1/4 | 12.0 | 18.4 |
| FS6-M5MY | FS6-M5MYW | 38.4 | 25.0 | 12.0 | 6 | 12.0 | 35.4 | 13.0 | M5×0.8 | 12.5 | 8.7 |
| FS6-01MY | FS6-01MYW | 42.9 | 25.0 | 12.0 | 6 | 12.0 | 38.9 | 13.0 | R1/8 | 12.5 | 11.4 |
| FS6-02MY | FS6-02MYW | 45.9 | 25.0 | 12.0 | 6 | 14.0 | 39.9 | 13.0 | R1/4 | 12.5 | 18.8 |
| FS6-03MY | FS6-03MYW | 47.9 | 25.0 | 12.0 | 6 | 17.0 | 41.5 | 13.0 | R3/8 | 12.5 | 31.0 |
| FS8-01MY | FS8-01MYW | 46.4 | 29.0 | 14.0 | 8 | 14.0 | 42.4 | 15.0 | R1/8 | 13.7 | 15.0 |
| FS8-02MY | FS8-02MYW | 49.4 | 29.0 | 14.0 | 8 | 14.0 | 43.4 | 15.0 | R1/4 | 13.7 | 18.8 |
| FS8-03MY | FS8-03MYW | 51.4 | 29.0 | 14.0 | 8 | 17.0 | 45.0 | 15.0 | R3/8 | 13.7 | 30.7 |
| FS10-01MY | FS10-01MYW | 52.7 | 35.0 | 17.0 | 10 | 17.0 | 48.7 | 18.0 | R1/8 | 14.6 | 24.3 |
| FS10-02MY | FS10-02MYW | 55.7 | 35.0 | 17.0 | 10 | 17.0 | 49.7 | 18.0 | R1/4 | 14.6 | 27.3 |
| FS10-03MY | FS10-03MYW | 56.7 | 35.0 | 17.0 | 10 | 17.0 | 50.3 | 18.0 | R3/8 | 14.6 | 33.0 |
| FS10-04MY | FS10-04MYW | 59.7 | 35.0 | 17.0 | 10 | 21.0 | 51.7 | 18.0 | R1/2 | 14.6 | 53.7 |
| FS12-02MY | FS12-02MYW | 59.3 | 41.0 | 20.0 | 12 | 19.0 | 53.3 | 21.0 | R1/4 | 15.4 | 35.1 |
| FS12-03MY | FS12-03MYW | 60.3 | 41.0 | 20.0 | 12 | 21.0 | 53.9 | 21.0 | R3/8 | 15.4 | 41.8 |
| FS12-04MY | FS12-04MYW | 63.3 | 41.0 | 20.0 | 12 | 21.0 | 55.3 | 21.0 | R1/2 | 15.4 | 55.0 |