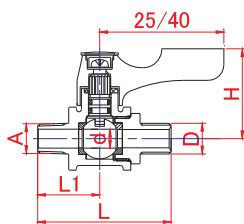
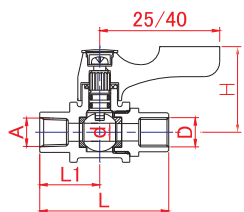


BS 両外ネジ型



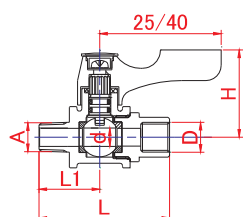
品番	φd	A (R)	D (G)	L1	L	H (約)
BS-1011	6	1/8	1/8	20	43	29
BS-1012	6	1/8	1/4	20	43	29
BS-1021	6	1/4	1/8	20	43	29
BS-1022	6	1/4	1/4	20	43	29
BS-1023	6	1/4	3/8	20	43	29
BS-1032	6	3/8	1/4	20	43	29
BS-1033	6	3/8	3/8	20	43	29
BS-2033	8	3/8	3/8	26.5	54.5	31
BS-2034	8	3/8	1/2	26.5	55	31
BS-2043	8	1/2	3/8	26.5	54.5	31
BS-2044	8	1/2	1/2	26.5	55	31

BW 両内ネジ型



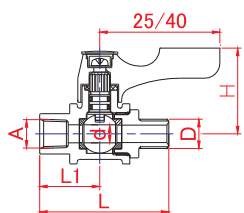
品番	φd	A (R)	D (G)	L1	L	H (約)
BW-1011	6	1/8	1/8	20	43	29
BW-1012	6	1/8	1/4	20	42	29
BW-1021	6	1/4	1/8	20	43	29
BW-1022	6	1/4	1/4	20	42	29
BW-1023	6	1/4	3/8	20	43	29
BW-2033	8	3/8	3/8	26.5	53	31

BM 外、内ネジ型



品番	φd	A (R)	D (G)	L1	L	H (約)
BM-1011	6	1/8	1/8	20	43	29
BM-1012	6	1/8	1/4	20	42	29
BM-1021	6	1/4	1/8	20	43	29
BM-1022	6	1/4	1/4	20	42	29
BM-1032	6	3/8	1/4	20	42	29
BM-2033	8	3/8	3/8	26.5	53	31
BM-2043	8	1/2	3/8	26.5	53	31

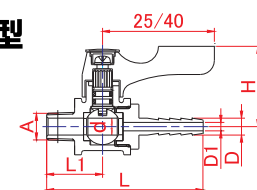
BV 内、外ネジ型



品番	φd	A (Rc)	D (G)	L1	L	H (約)
BV-1011	6	1/8	1/8	20	43	29
BV-1012	6	1/8	1/4	20	43	29
BV-1021	6	1/4	1/8	20	43	29
BV-1022	6	1/4	1/4	20	43	29
BV-1023	6	1/4	3/8	20	43	29
BV-2033	8	3/8	3/8	26.5	54.5	31
BV-2034	8	3/8	1/2	26.5	55	31

BH ホースニップル一体型

あらゆるホースに



品番	φd	A (R)	φD	φD1	L1	L	H (約)
BH-1106	6	1/8	6	3	20	56	29
BH-1107	6	1/8	7	4	20	56	29
BH-1206	6	1/4	6	3	20	56	29
BH-1208	6	1/4	8	5	20	58	29
BH-1209	6	1/4	9	6	20	58	29
BH-1309	6	3/8	9	6	20	58	29
BH-1310	6	3/8	10.5	6	20	60	29
BH-2310	8	3/8	10.5	7	26.5	69	31
BH-2414	8	1/2	14	8	26.5	69	31